



D330E Series

USER MANUAL/Network Fax Operations

- Before using this Product, please read the USER MANUAL carefully and keep it for your reference.





Table of contents

1 Sending and Receiving an Internet Fax

1.1	Overview of Internet Fax Function	1-2
1.1.1	About Internet Fax	1-2
1.1.2	Main Menu of Internet Fax	1-2
1.2	Preparation Required to Use this Function (for the administrator)	1-4
1.2.1	Settings Required to Use this Function	1-4
	Configuring the Internet fax environment	1-4
	Registering the sender information.....	1-4
	Specifying the date and time	1-4
1.2.2	Optional Settings	1-4
	Registering a frequently used destination	1-4
	Registering the LDAP server used to search for a destination	1-4
	Registering prefixes and suffixes for destination.....	1-4
	Registering a subject and text of the successfully received E-mail message	1-4
1.3	How to Send a Fax	1-5
1.3.1	Sending (Basic Operation Flow).....	1-5
1.3.2	Specifying a Destination	1-7
	Directly entering the destination	1-7
	Using Address Book	1-7
	Searching for the registered destination.....	1-7
	Specifying the target from the destinations registered in the LDAP server (LDAP Search).....	1-7
	Using Job History	1-8
1.4	How to Receive a Fax	1-9
1.5	Receiving Options	1-10

2 Sending and Receiving an IP Address Fax

2.1	Overview of IP Address Fax	2-2
2.1.1	About IP Address Fax	2-2
2.1.2	Main Screen of IP Address Fax	2-2
2.2	Preparation Required to Use this Function (for the administrator)	2-4
2.2.1	Settings Required to Use this Function	2-4
	Configuring the IP address fax environment	2-4
	Registering the sender information.....	2-4
	Specifying the date and time	2-4
2.2.2	Optional Settings	2-4
	Registering a frequently used destination	2-4
2.3	How to Send a Fax	2-5
2.3.1	Sending (Basic Operation Flow).....	2-5
2.3.2	Specifying a Destination	2-6
	Directly entering the destination	2-6
	Using Address Book	2-7
	Searching for the registered destination.....	2-7
	Using Job History	2-7
2.4	How to Receive a Fax	2-8
2.5	Receiving Options	2-9

3 Sending and Receiving an IP Fax (SIP)

3.1	Overview of IP Fax (SIP) Function	3-2
3.1.1	About IP Fax (SIP).....	3-2
3.1.2	Main Screen of IP Fax (SIP)	3-3
3.2	Preparation Required to Use this Function (for the administrator)	3-4



3.2.1	Settings Required to Use this Function	3-4
	Configuring the IP fax (SIP) operating environment.....	3-4
	Registering the sender information.....	3-4
	Specifying the date and time	3-4
3.2.2	Optional Settings	3-4
	Registering a frequently used destination	3-4
3.3	How to Send a Fax	3-5
3.3.1	Sending (Basic Operation Flow).....	3-5
3.3.2	Specifying a Destination	3-6
	Directly entering the destination	3-6
	Using Address Book	3-7
	Searching for the registered destination.....	3-7
	Using Job History	3-7
3.4	How to Receive a Fax	3-8
3.5	Receiving Options.....	3-9

4 About Network Fax Report

5 Registering and Managing Destinations

6 Using Network Fax Functions in Classic Style

6.1	Displaying the Scan/Fax Screen	6-2
	Displaying from the main menu of classic style.....	6-2
	Displaying from the home screen of basic style	6-2
6.2	Basic Operations for Network Fax Transmission	6-4
6.3	Manual Receiving of Internet Fax.....	6-6



Sending and Receiving an Internet Fax

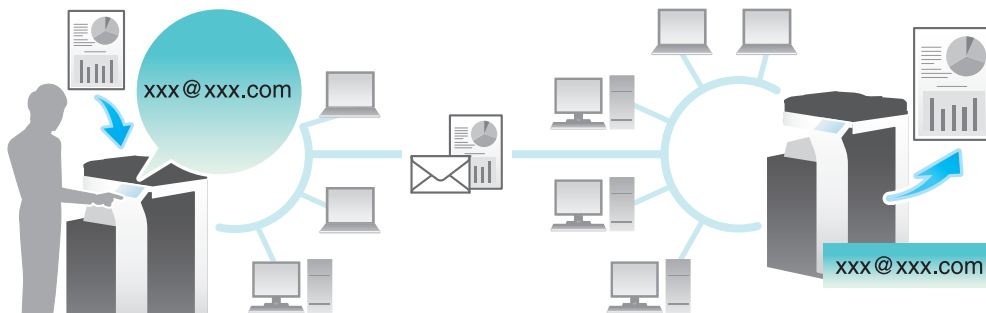
1 Sending and Receiving an Internet Fax

1.1 Overview of Internet Fax Function

1.1.1 About Internet Fax

Internet fax is a function used to send and receive fax via enterprise network and Internet.

You can send and receive faxes without having to worry about high communication costs to send to distant locations or to send a large number of pages.



The following describes the precautions for using the Internet Fax.

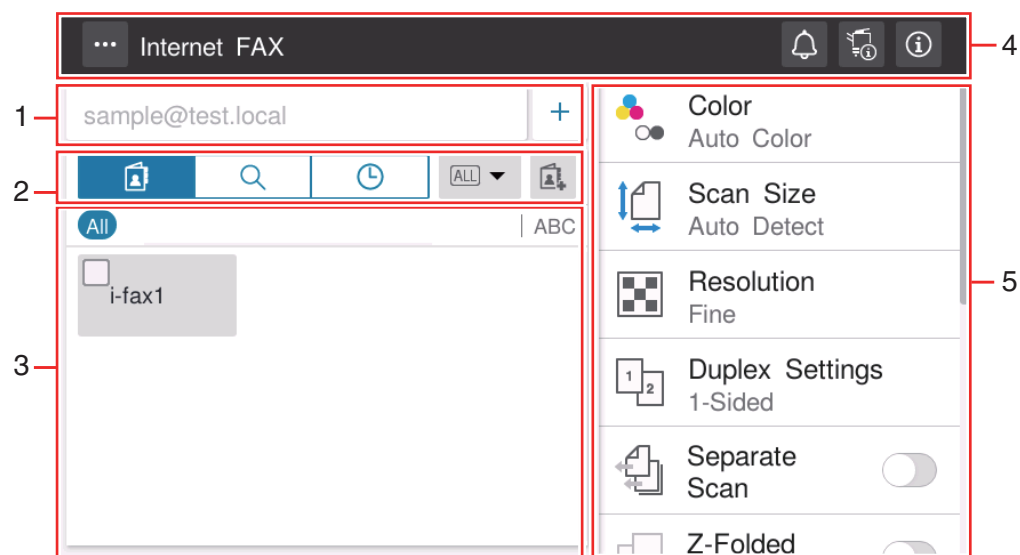
- Internet fax is sent or received via E-mail. Prepare a dedicated Internet fax E-mail address for this machine.
- Connect this machine to a network that is capable of sending and receiving E-mail messages.
- When an attempt is made to send many original pages or high-resolution original data, it may cause a sending failure due to the limitation of the destination E-mail server.

Tips

- To use the Internet Fax function, ask your service representative to configure settings. For details, contact your service representative.

1.1.2 Main Menu of Internet Fax

If you tap [Internet Fax] on the home screen, the main screen of Internet Fax is displayed.



No.	Name	Description
1	Destination display area	Displays the specified destinations. If two or more destinations are specified, the number of destinations is indicated by [+N] (N: number). When you tap while the destination is specified, the destination list screen is displayed. You can check, edit, or delete the specified destinations. You can tap [+] to directly enter destination information and add a new destination.
2	Display switch tab	Switches the destination specification method. The display of the destination specification area is switched depending on the selected tab. <ul style="list-style-type: none"> • Destination tab (📁): Specify the desired one from the list of destinations registered on this machine. • Search tab (🔍): Search for the destination registered on this machine or the LDAP server. • History tab (🕒): Specify the desired one from the job history list. • Address registration key (📇): Allow you to register a destination in the address book on this machine.
3	Destination specification area	Specify the destination to suit the selected tab.
4	Menu icon (☰)	Allows you to change how to display the list of registered destinations in the destination specification area. When [Change Permission for Default Value Setting] ("User's Guide[Descriptions of Functions/Utility Keys]/[Administrator]") is set to ON, you can change the default option setting for sending to the desired one.
	Notification icon (🔔)	You can check warnings or messages related to the status of this machine.
	Device information icon (📱)	For details, refer to "User's Guide[Control Panel]/[About Major Screens]".
	Information icon (ℹ)	
5	Function setting key	Specify transmission options as needed.

1.2 Preparation Required to Use this Function (for the administrator)

1.2.1 Settings Required to Use this Function

Configuring the Internet fax environment

Configure the settings to use the Internet fax function.

For details on the setting procedure, refer to "User's Guide[Web Management Tool]/[Configuring the Network Fax Environment]".

Registering the sender information

Register the machine name, company name, etc. to be printed on faxes.

For details on the registration procedure, refer to "User's Guide[Web Management Tool]/[Configuring the Fax Environment]".

Specifying the date and time

Set the date and time on this machine to be printed on sent and received faxes.

For details on the setting procedure, refer to "User's Guide[Web Management Tool]/[Configuring Basic Information Settings of this Machine]".

1.2.2 Optional Settings

Registering a frequently used destination

Pre-registering a frequently used destination, this machine will save you the trouble of having to enter it each time you send data.

For details on the registration procedure, refer to "User's Guide[Introduction]/[Registering and Managing Destinations]".

Registering the LDAP server used to search for a destination

If the LDAP server or the Active Directory of Windows Server is used for user management, you can search for destination information registered in the server and specify the desired destination.

For details on the registration procedure, refer to "User's Guide[Web Management Tool]/[Configuring the Scan Transmission Environment]".

Registering prefixes and suffixes for destination

Register a prefix and suffix of an E-mail address.

If a domain contains a large number of E-mail addresses, register a character string (domain name) following an "@" (at mark). By registering a domain name, you can recall the registered domain name to complement E-mail address entry. This will help to prevent input errors of E-mail addresses with long domain names.

For details on the registration procedure, refer to "User's Guide[Web Management Tool]/[Registering Various Types of Information]".

Registering a subject and text of the successfully received E-mail message

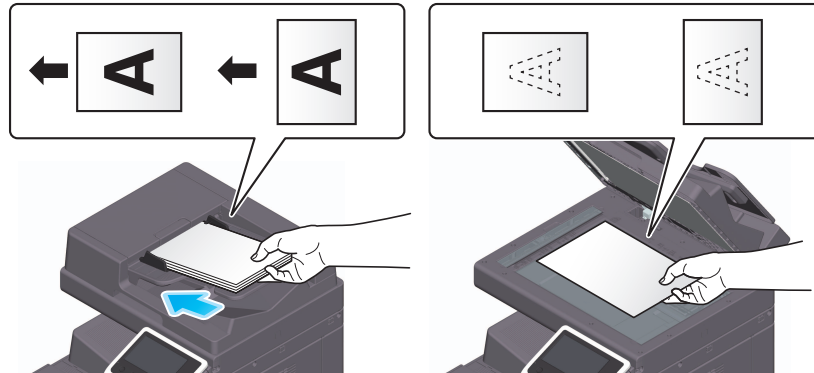
When the destination machine receives an Internet fax, first the fax is printed, then the document that notifies the successful reception of the E-mail message (successful reception E-mail) is printed. This document contains the subject and text that are specified when the fax is sent from this machine.

For details on the registration procedure, refer to "User's Guide[Web Management Tool]/[Registering Various Types of Information]".

1.3 How to Send a Fax

1.3.1 Sending (Basic Operation Flow)

- 1 Load the original.

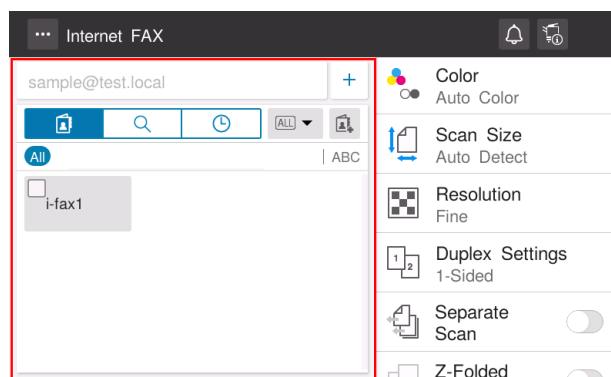


- 2 Tap [Internet Fax] on the home screen.



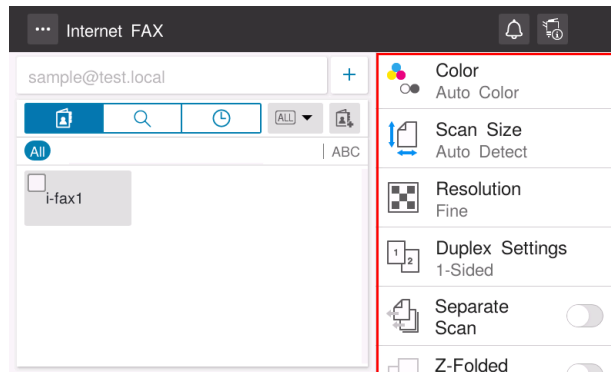
- 3 Specify the destination.

→ For details on how to specify a destination, refer to page 1-7.



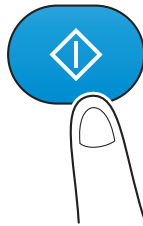
4 Specify transmission options as needed.

- For details on option settings, refer to "User's Guide[Scan Operations]/[Sending Original Data as an E-mail Attachment (Scan to E-mail)]".



5 Use the Start key to start transmission.

- Using the Stop key enables you to stop scanning the original. A list of the currently stopped jobs is displayed. To stop transmission, select the target job from the list, and delete it.



Tips

- When an Internet fax is sent, a TX result report is printed on this machine. With the TX result report, you can check for successful fax transmission.
- When the destination machine receives an Internet fax, an MDN message is printed on this machine. With the MDN Message, you can check that the destination machine receives the fax normally.

Reference

About Network Fax Report (page 4-2)

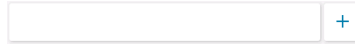
Changing the default option setting ("User's Guide[Scan Operations]/[Sending Original Data as an E-mail Attachment (Scan to E-mail)]")

1.3.2 Specifying a Destination

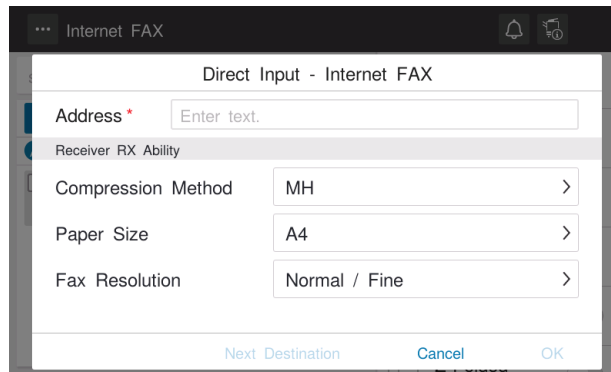
Directly entering the destination

Directly enter destination information.

- 1 Tap [+].



- 2 Enter destination information.



Setting	Description
[Address]	Enter the E-mail address of the destination (using up to 320 characters, excluding spaces).
[Receiver RX Ability]	Specify the Internet fax receiving ability of the recipient. <ul style="list-style-type: none"> • [Compression Method]: Select a compression type available for the destination machine. • [Paper Size]: Select a paper size available for the destination machine. • [Fax Resolution]: Select a resolution available for the destination machine.

- 3 Tap [OK].

Using Address Book

Selecting the Destination tab (📁) displays a list of destinations registered on this machine. Switch the display using an index, and specify the target destination. For details, refer to "User's Guide[Scan Operations]/[Sending Original Data as an E-mail Attachment (Scan to E-mail)]".

Searching for the registered destination

Tapping the Search tab (🔍) displays the destination search screen. If a large number of destinations are registered, the system searches for the registered name of the destination or characters of the address to find the target destination. For details, refer to "User's Guide[Scan Operations]/[Sending Original Data as an E-mail Attachment (Scan to E-mail)]".

Specifying the target from the destinations registered in the LDAP server (LDAP Search)

Tapping the Search tab (🔍) displays the destination search screen. If the LDAP server or the Active Directory of Windows Server is used for user management, you can search for destination information registered in the server and specify the desired destination. For details, refer to "User's Guide[Scan Operations]/[Sending Original Data as an E-mail Attachment (Scan to E-mail)]".

Using Job History

Tapping the History tab (🕒) displays a list of transmission logs. Specify the target destination from the previous five job histories. For details, refer to "User's Guide[Scan Operations]/[Sending Original Data as an E-mail Attachment (Scan to E-mail)]".

1.4 How to Receive a Fax

The machine automatically inquires the mail server for fax reception status at a predetermined interval (default: 15 minutes). If any fax is received successfully, it is received and printed automatically.



Reference

Changing the fax print setting (for the administrator) ("User's Guide[Fax Operations]/[Receiving Options]")

1.5 Receiving Options

The following receiving functions are available in Internet Fax.

Receiving function	Reference
Printing by Adding the Date and Time Received ([Footer Position])	"User's Guide[Fax Operations]/[Receiving Options]"
Saving/Forwarding a Fax Which Cannot Be Printed (In-memory Proxy Reception)	"User's Guide[Fax Operations]/[Receiving Options]"
Forcibly Saving a Received Fax in a User Box (Memory RX)	"User's Guide[Fax Operations]/[Receiving Options]"
Forwarding Received Faxes to Another Destination (Forward TX)	"User's Guide[Fax Operations]/[Receiving Options]"
Stopping the Fax Print During Lunch Breaks and at Night	"User's Guide[Fax Operations]/[Receiving Options]"
Printing a Fax on Both Sides of Paper ([Duplex Print (RX)])	"User's Guide[Fax Operations]/[Receiving Options]"



Sending and Receiving an IP Address Fax

2 Sending and Receiving an IP Address Fax

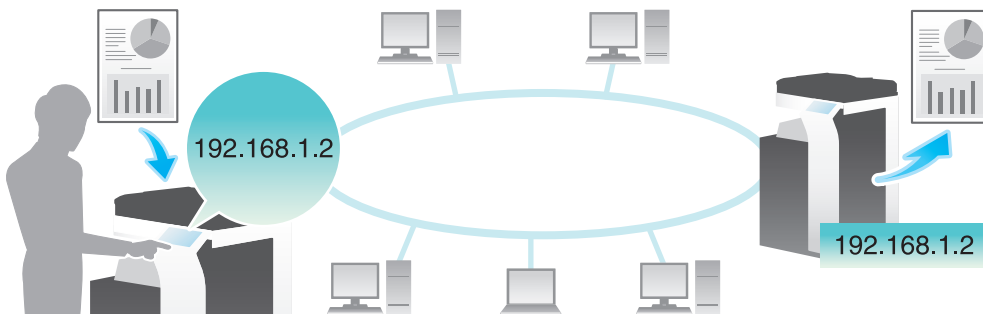
2.1 Overview of IP Address Fax

2.1.1 About IP Address Fax

IP Address Fax is a function used to send and receive faxes within a limited network such as an enterprise network.

Specify an IP address for the destination. The same network as the one used by the computers is used to send faxes. Therefore, communication costs are not charged as they are for normal faxes.

In addition to IP address, you can also use a host name and E-mail address to specify the destination.

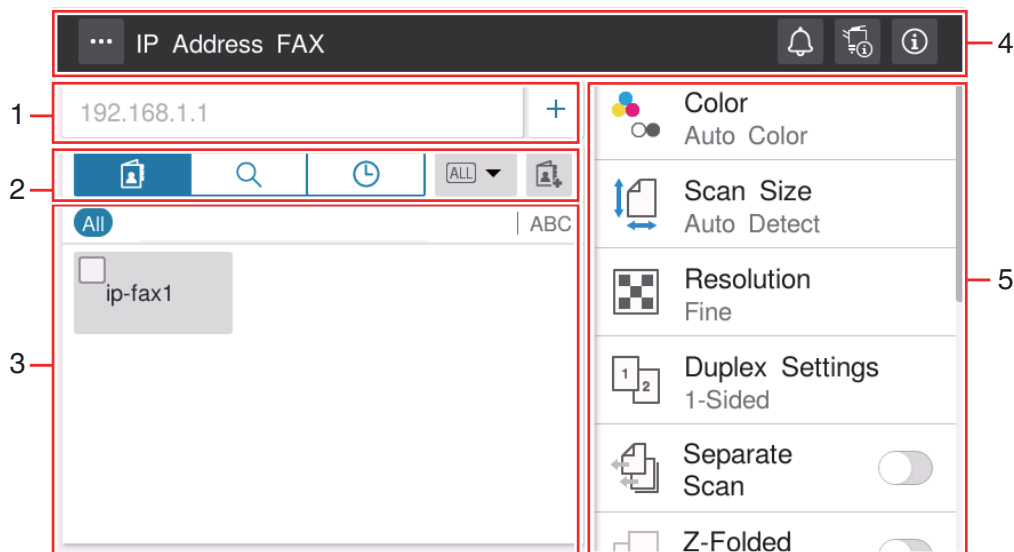


Tips

- To use the IP Address Fax function, an option is required. For details on the required option, refer to "User's Guide[About This Machine]/[List of Functions with Options Required]".
- To use the IP Address Fax function, ask your service representative to configure settings. For details, contact your service representative.
- The IP Address Fax function is only available between our models supporting the function or between devices matching the DirectSMTP standard. We do not give operational warranties for devices other than the models supporting the function.

2.1.2 Main Screen of IP Address Fax

If you tap [IP Address Fax] on the home screen, the main screen of IP Address Fax is displayed.



No.	Name	Description
1	Destination display area	Displays the specified destinations. If two or more destinations are specified, the number of destinations is indicated by [+N] (N: number). When you tap while the destination is specified, the destination list screen is displayed. You can check, edit, or delete the specified destinations. You can tap [+] to directly enter destination information and add a new destination.
2	Display switch tab	Switches the destination specification method. The display of the destination specification area is switched depending on the selected tab. <ul style="list-style-type: none"> • Destination tab (📍): Specify the desired one from the list of destinations registered on this machine. • Search tab (🔍): Search for the destination registered on this machine. • History tab (🕒): Specify the desired one from the job history list. • Address registration key (📁): Allow you to register a destination in the address book on this machine.
3	Destination specification area	Specify the destination to suit the selected tab.
4	Menu icon (☰)	Allows you to change how to display the list of registered destinations in the destination specification area. When [Change Permission for Default Value Setting] ("User's Guide[Descriptions of Functions/Utility Keys]/[Administrator]") is set to ON, you can change the default option setting for sending to the desired one.
	Notification icon (🔔)	You can check warnings or messages related to the status of this machine.
	Device information icon (📱)	For details, refer to "User's Guide[Control Panel]/[About Major Screens]".
	Information icon (ℹ️)	
5	Function setting key	Specify transmission options as needed.

2.2 Preparation Required to Use this Function (for the administrator)

2.2.1 Settings Required to Use this Function

Configuring the IP address fax environment

Configure the settings for using the IP Address Fax function.

For details on the setting procedure, refer to "User's Guide[Web Management Tool]/[Configuring the Network Fax Environment]".

Registering the sender information

Register the machine name, company name, etc. to be printed on faxes.

For details on the registration procedure, refer to "User's Guide[Descriptions of Functions/Utility Keys]/[Administrator]".

Specifying the date and time

Set the date and time on this machine to be printed on sent and received faxes.

For details on the setting procedure, refer to "User's Guide[Web Management Tool]/[Configuring Basic Information Settings of this Machine]".

2.2.2 Optional Settings

Registering a frequently used destination

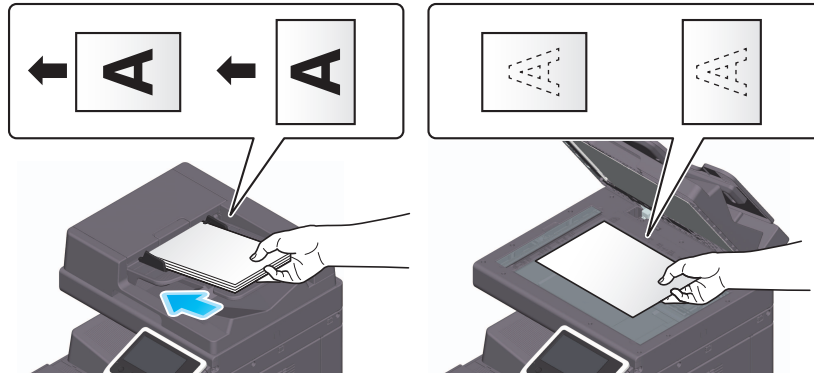
Pre-registering a frequently used destination, this machine will save you the trouble of having to enter it each time you send data.

For details on the registration procedure, refer to "User's Guide[Introduction]/[Registering and Managing Destinations]".

2.3 How to Send a Fax

2.3.1 Sending (Basic Operation Flow)

- 1 Load the original.

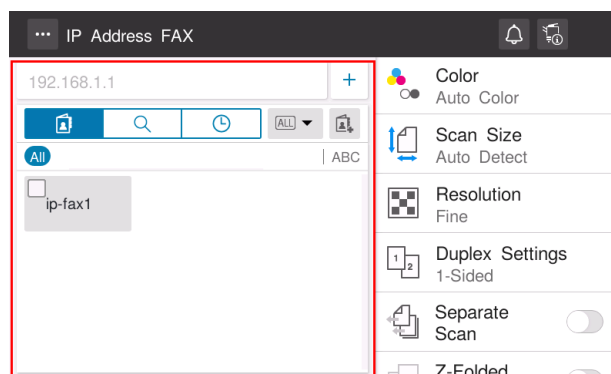


- 2 Tap [IP Address Fax] on the home screen.

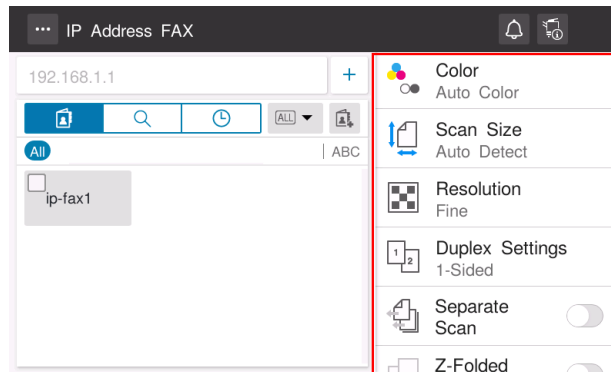


- 3 Specify the destination.

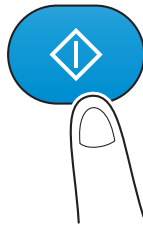
→ For details on how to specify a destination, refer to page 2-6.



- 4 Specify transmission options as needed.
 - For details on option settings, refer to "User's Guide[Scan Operations]/[Sending Original Data as an E-mail Attachment (Scan to E-mail)]".



- 5 Use the Start key to start transmission.
 - Using the Stop key enables you to stop scanning the original. A list of the currently stopped jobs is displayed. To stop transmission, select the target job from the list, and delete it.



Reference

Resending a Fax ("User's Guide[Fax Operations]/[Sending Options]")

Changing the default option setting ("User's Guide[Scan Operations]/[Sending Original Data as an E-mail Attachment (Scan to E-mail)])"

2.3.2 Specifying a Destination

Directly entering the destination

Directly enter destination information.

- 1 Tap [+].



2 Enter destination information.

Setting	Description
[Address]	<p>Enter the destination address.</p> <ul style="list-style-type: none"> If [IP Address (Host Name)] is selected for [Address Type], enter the destination IP address or host name. Example to enter the IP address (IPv4): "192.168.1.1" Example to enter the IP address (IPv6): "fe80::220:6bff:fe10:2f16" Example to enter the host name: "host.example.com" (Include the domain name to enter.) If [E-mail Address] is selected for [Address Type], enter the destination E-mail address. To specify a destination using an E-mail address, enter the recipient's IP address following "ipaddrfax@". To enter an IP address, enclose it with brackets []. Example to enter the IP address (IPv4): "ipaddrfax@[192.168.1.1]" Example to enter the IP address (IPv6): "ipaddrfax@[fe80::220:6bff:fe10:2f16]" The host name cannot be entered following symbol "@" of the E-mail address.
[Address Type]	Select the format to specify the destination address (default: [IP Address (Host Name)]).
[Port number]	If necessary, change the port number (default: [25]).
[Machine Type of Destination]	Select whether the destination machine supports the color mode (default: [Monochrome]).

3 Tap [OK].

Using Address Book

Selecting the Destination tab (📁) displays a list of destinations registered on this machine. Switch the display using an index, and specify the target destination. For details, refer to "User's Guide[Scan Operations]/[Sending Original Data as an E-mail Attachment (Scan to E-mail)]".

Searching for the registered destination

Tapping the Search tab (🔍) displays the destination search screen. If a large number of destinations are registered, the system searches for the registered name of the destination or characters of the address to find the target destination. For details, refer to "User's Guide[Scan Operations]/[Sending Original Data as an E-mail Attachment (Scan to E-mail)]".

Using Job History

Tapping the History tab (🕒) displays a list of transmission logs. Specify the target destination from the previous five job histories. For details, refer to "User's Guide[Scan Operations]/[Sending Original Data as an E-mail Attachment (Scan to E-mail)]".

2.4 How to Receive a Fax

IP address faxes are sent and received directly between machines. This machine prints data automatically when a fax is received.



Reference

Changing the fax print setting (for the administrator) ("User's Guide[Fax Operations]/[Receiving Options]")

2.5 Receiving Options

The following receiving functions are available in IP Address Fax.

Receiving function	Reference
Printing by Adding the Date and Time Received ([Footer Position])	"User's Guide[Fax Operations]/[Receiving Options]"
Saving/Forwarding a Fax Which Cannot Be Printed (In-memory Proxy Reception)	"User's Guide[Fax Operations]/[Receiving Options]"
Forcibly Saving a Received Fax in a User Box (Memory RX)	"User's Guide[Fax Operations]/[Receiving Options]"
Forwarding Received Faxes to Another Destination (Forward TX)	"User's Guide[Fax Operations]/[Receiving Options]"
Stopping the Fax Print During Lunch Breaks and at Night	"User's Guide[Fax Operations]/[Receiving Options]"
Printing a Fax on Both Sides of Paper ([Duplex Print (RX)])	"User's Guide[Fax Operations]/[Receiving Options]"



Sending and Receiving an IP Fax (SIP)

3 Sending and Receiving an IP Fax (SIP)

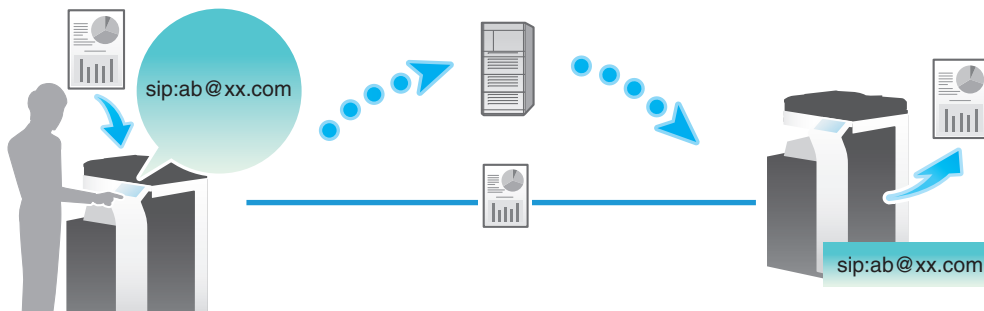
3.1 Overview of IP Fax (SIP) Function

3.1.1 About IP Fax (SIP)

IP fax (SIP) is a function that enables the real-time sending/receiving via the intranet and Internet.

This function provides a low cost and low latency communication even when sending/receiving a fax to/from remote locations.

Using the SIP server allows you to specify and call the identifier (SIP-URI) instead of the destination's IP address.



The precautions for using the IP fax (SIP) function are as follows.

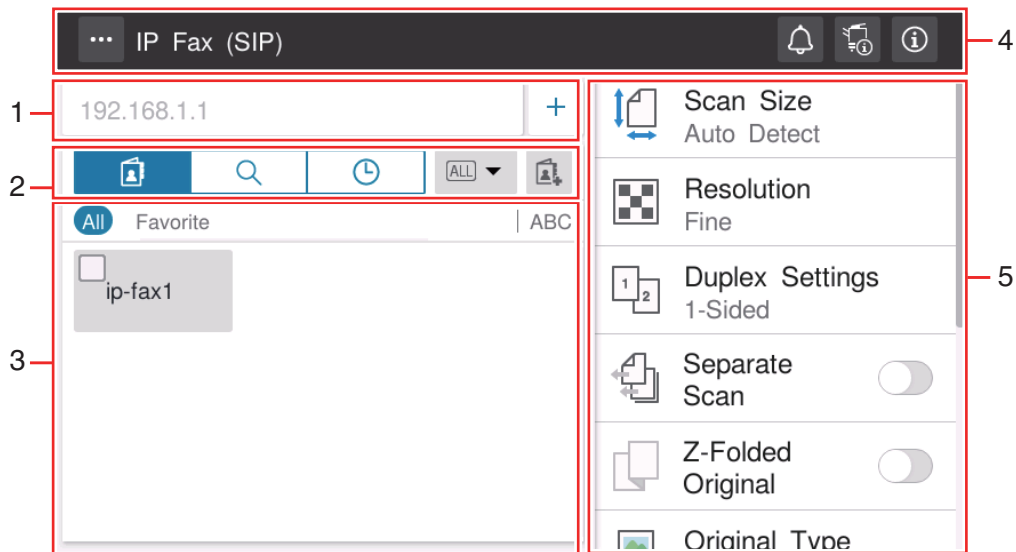
- Fax data cannot be sent or received in color.
- IP fax (SIP) is not available on the screen of classic style.

Tips

- To use the IP fax (SIP) function, an option is required. For details on the required option, refer to "User's Guide[About This Machine]/[List of Functions with Options Required]".
- To use the IP fax (SIP) function, ask your service representative to configure settings. For details, contact your service representative.

3.1.2 Main Screen of IP Fax (SIP)

If you tap [IP Fax (SIP)] on the home screen, the main screen of IP fax (SIP) is displayed.



No.	Name	Description
1	Destination display area	Displays the specified destinations. If two or more destinations are specified, the number of destinations is indicated by [+N] (N: number). When you tap while the destination is specified, the destination list screen is displayed. You can check, edit, or delete the specified destinations. You can tap [+] to directly enter destination information and add a new destination.
2	Display switch tab	Switches the destination specification method. The display of the destination specification area is switched depending on the selected tab. <ul style="list-style-type: none"> Destination tab (📄): Specify the desired one from the list of destinations registered on this machine. Search tab (🔍): Search for the destination registered on this machine. History tab (🕒): Specify the desired one from the job history list. Address registration key (📁): Allow you to register a destination in the address book on this machine.
3	Destination specification area	Specify the destination to suit the selected tab.
4	Menu icon (☰)	Allows you to change how to display the list of registered destinations in the destination specification area. When [Change Permission for Default Value Setting] ("User's Guide[Descriptions of Functions/Utility Keys]/[Administrator]") is set to ON, you can change the default option setting for sending to the desired one.
	Notification icon (🔔)	You can check warnings or messages related to the status of this machine.
	Device information icon (🖨️)	For details, refer to "User's Guide[Control Panel]/[About Major Screens]".
	Information icon (ℹ️)	
5	Function setting key	Specify transmission options as needed.

3.2 Preparation Required to Use this Function (for the administrator)

3.2.1 Settings Required to Use this Function

Configuring the IP fax (SIP) operating environment

Configure the setting to use the IP fax (SIP) function.

For details on the setting procedure, refer to "User's Guide[Web Management Tool]/[Configuring the Network Fax Environment]".



Tips

Precautions for connecting this machine to the router

- When connecting this machine through the router equipped with the SIP function, select [Network] - [SIP setting]-[SIP Basic setting] in Administrator Setting of this machine, and set [Port Number] to a number different from the SIP receiving port number of the router. If the SIP receiving port number is the same between this machine and the router, this machine cannot receive an IP fax (SIP). For details on the SIP receiving port number of the router, refer to the instruction manual of the router.

Registering the sender information

Register the machine name, company name, etc. to be printed on faxes.

For details on the registration procedure, refer to "User's Guide[Descriptions of Functions/Utility Keys]/[Administrator]".

Specifying the date and time

Set the date and time on this machine to be printed on sent and received faxes.

For details on the setting procedure, refer to "User's Guide[Web Management Tool]/[Configuring Basic Information Settings of this Machine]".

3.2.2 Optional Settings

Registering a frequently used destination

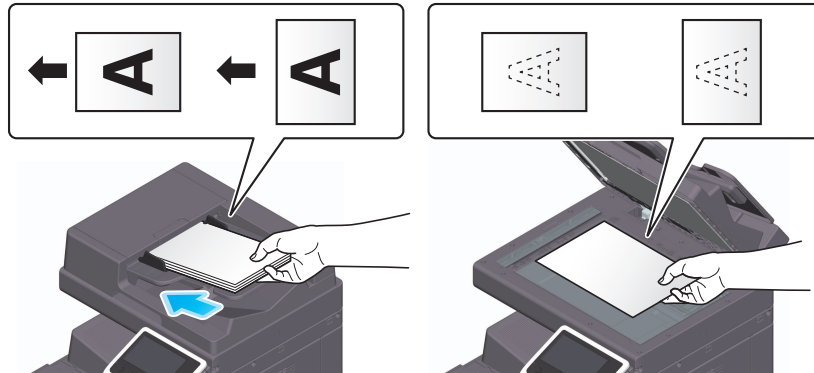
Pre-registering a frequently used destination, this machine will save you the trouble of having to enter it each time you send data.

For details on the registration procedure, refer to "User's Guide[Introduction]/[Registering and Managing Destinations]".

3.3 How to Send a Fax

3.3.1 Sending (Basic Operation Flow)

- 1 Load the original.

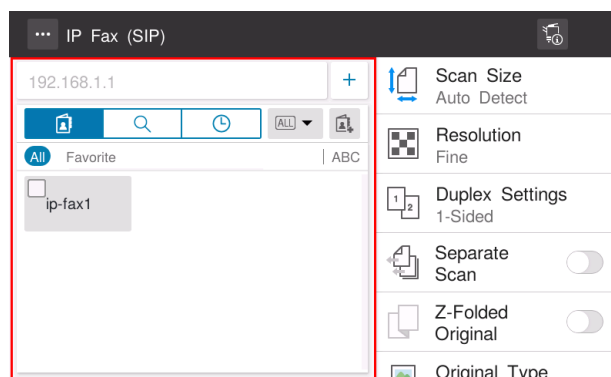


- 2 Tap [IP Fax (SIP)] on the home screen.

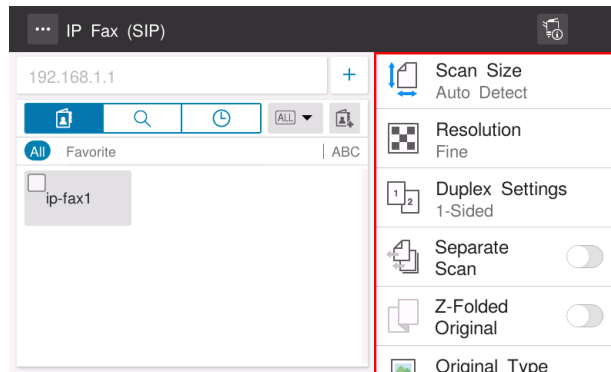


- 3 Specify the destination.

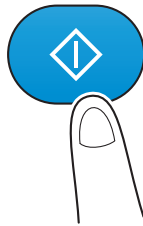
→ For details on how to specify a destination, refer to page 2-6.



- 4 Specify transmission options as needed.
 - For details on option settings, refer to "User's Guide[Scan Operations]/[Sending Original Data as an E-mail Attachment (Scan to E-mail)]".



- 5 Use the Start key to start transmission.
 - Using the Stop key enables you to stop scanning the original. A list of the currently stopped jobs is displayed. To stop transmission, select the target job from the list, and delete it.



Reference

Changing the default option setting ("User's Guide[Scan Operations]/[Sending Original Data as an E-mail Attachment (Scan to E-mail)]")

3.3.2 Specifying a Destination

Directly entering the destination

Directly enter destination information.

- 1 Tap [+].



2 Enter destination information.

Setting	Description
[Address]	<p>Enter the destination address.</p> <ul style="list-style-type: none"> If [IP Address (Host Name)] is selected for [Address Type], enter the destination IP address or host name. Example to enter the IP address (IPv4): "192.168.1.1" Example to enter the IP address (IPv6): "fe80::220:6bff:fe10:2f16" Example to enter the host name: "host.example.com" (Include the domain name to enter.) If [SIP-URI/SIP User Name] is selected for [Destination Type], enter the destination SIP-URI. Entry example: "sip:abc@example.com" When only the SIP user name is entered, the SIP domain name of this machine is used as the destination's domain name.
[Address Type]	<p>Select the method to specify the address (default: [IP Address (Host Name)]).</p> <ul style="list-style-type: none"> [IP Address (Host Name)]: Select this option when directly calling the destination. [SIP-URI (SIP User Name) input]: Select this option when calling the destination via the SIP server.
[Port number]	<p>When [IP Address (Host Name)] is selected in [Address Type], change the port number as needed (default: [5060]).</p>
[Connection Mode]	<p>Select the transport protocol (default: [UDP]).</p>

3 Tap [OK].

Using Address Book

Selecting the Destination tab (📁) displays a list of destinations registered on this machine. Switch the display using an index, and specify the target destination. For details, refer to "User's Guide[Scan Operations]/[Sending Original Data as an E-mail Attachment (Scan to E-mail)]".

Searching for the registered destination

Tapping the Search tab (🔍) displays the destination search screen. If a large number of destinations are registered, the system searches for the registered name of the destination or characters of the address to find the target destination. For details, refer to "User's Guide[Scan Operations]/[Sending Original Data as an E-mail Attachment (Scan to E-mail)]".

Using Job History

Tapping the History tab (🕒) displays a list of transmission logs. Specify the target destination from the previous five job histories. For details, refer to "User's Guide[Scan Operations]/[Sending Original Data as an E-mail Attachment (Scan to E-mail)]".

3.4 How to Receive a Fax

IP fax (SIP) provides direct sending/receiving between devices. This machine prints data automatically when a fax is received.



Reference

Changing the fax print setting (for the administrator) ("User's Guide[Fax Operations]/[Receiving Options]")

3.5 Receiving Options

The following receiving functions are available in IP fax (SIP).

Receiving function	Reference
Printing by Adding the Date and Time Received ([Footer Position])	"User's Guide[Fax Operations]/[Receiving Options]"
Saving/Forwarding a Fax Which Cannot Be Printed (In-memory Proxy Reception)	"User's Guide[Fax Operations]/[Receiving Options]"
Automatically Sorting Incoming Faxes (TSI Routing)	"User's Guide[Fax Operations]/[Receiving Options]"
Forcibly Saving a Received Fax in a User Box (Memory RX)	"User's Guide[Fax Operations]/[Receiving Options]"
Forwarding Received Faxes to Another Destination (Forward TX)	"User's Guide[Fax Operations]/[Receiving Options]"
Stopping the Fax Print During Lunch Breaks and at Night	"User's Guide[Fax Operations]/[Receiving Options]"
Printing a Fax on Both Sides of Paper ([Duplex Print (RX)])	"User's Guide[Fax Operations]/[Receiving Options]"

4

About Network Fax Report

4 About Network Fax Report

The following types of network fax reports are available.

Report name	Description
Activity Report	This report contains results of sent and received faxes. A total of 700 jobs are recorded on separate pages for transmission and reception. By default, the report is automatically printed for every 100 communications. If necessary, you can select [Job List] to manually print a sending only report or receiving only report.
TX Result Report	This report contains the results of fax transmission. By default, the report is automatically printed when a transmission failure occurs.
Broadcast Report	This report contains results of faxes sent by broadcast. By default, the report is automatically printed upon completion of the broadcast transmission.
Broadcast Reserved Report	This report contains records of reserved broadcast transmissions for IP fax (SIP). By default, the report is automatically printed when a broadcast transmission is reserved.
Network Fax RX Error Report	This report contains the results of Internet fax or IP address fax reception. By default, reports are automatically printed when a reception failure occurs.
Print MDN Message	A report that notifies of an Internet fax reception by the destination machine. By default, reports are automatically printed when this machine receives an MDN message.
Print DSN Message	A report that notifies of an Internet fax reception by the recipient mail server. When a DSN message is received by this machine, it is printed automatically. By default, reports are not printed automatically.
E-mail Message Body	A report that notifies of successful receipt of an Internet fax by the recipient machine, which is printed subsequent to reception. Reports are printed if the message (subject/text) is attached to the Internet fax. By default, reports are automatically printed.
E-Mail Subject/Text List	A list that contains the subject and text of Internet faxes or E-mail messages that are registered as fixed phrases. For details on the printing procedure, refer to "User's Guide[Descriptions of Functions/Utility Keys]/[Administrator]".
Job Settings List	This list contains the details of [Fax Settings]. For details on the printing procedure, refer to "User's Guide[Descriptions of Functions/Utility Keys]/[Administrator]".

Tips

- You can change printing conditions in [Report Settings] ("User's Guide[Descriptions of Functions/Utility Keys]/[Administrator]").
- The IP fax (SIP) report is the same as the G3 fax. For details, refer to "User's Guide[Fax Operations]/[About Fax Report]".

Reference

Report Description Contents ("User's Guide[Fax Operations]/[About Fax Report]")



Registering and Managing Destinations

5 Registering and Managing Destinations

Registering a frequently used destination on this machine will save you the trouble of having to enter it each time you send data.

Also, you can export destination information registered on this machine to make a backup copy or import the exported destination information to another machine to use it.

For details, refer to "User's Guide[Introduction]/[Registering and Managing Destinations]".



6

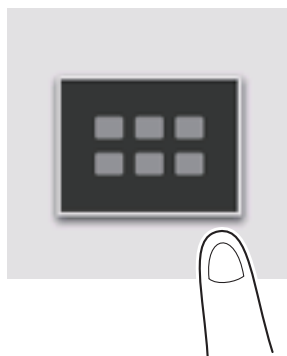
Using Network Fax Functions in Classic Style

6 Using Network Fax Functions in Classic Style

6.1 Displaying the Scan/Fax Screen

Displaying from the main menu of classic style

- 1 Tap [Classic Style] on the home screen.



- 2 Tap [Scan/Fax] on the main menu of classic style.

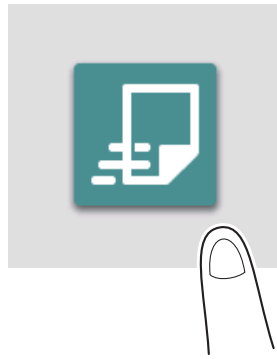


The Scan/Fax screen is displayed.

Displaying from the home screen of basic style

- ✓ You need to place [Classic Scan] on the home screen of basic style. For details on the setting procedure, refer to "User's Guide[Control Panel]/[About Major Screens]".

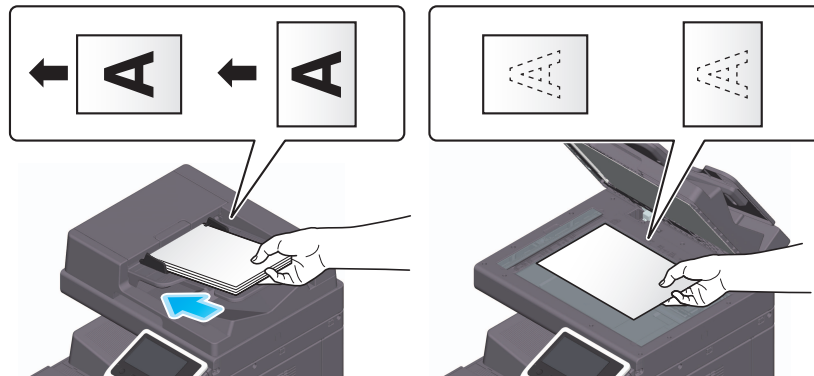
- 1 Tap [Classic Scan] on the home screen.



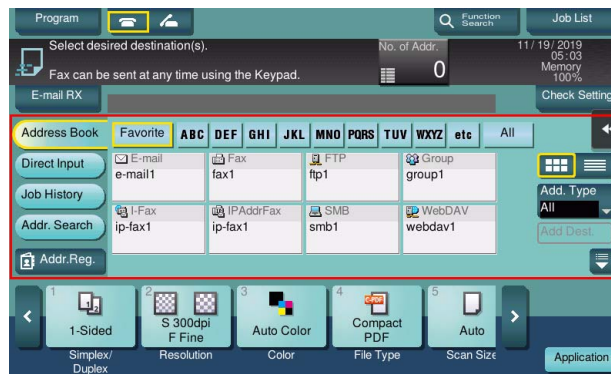
The Scan/Fax screen is displayed.

6.2 Basic Operations for Network Fax Transmission

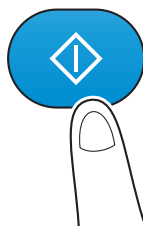
- 1 Load the original.



- 2 Display the Scan/Fax screen of classic style.
 - For details on how to display the screen, refer to page 6-2.
- 3 Specify the destination.



- 4 Specify transmission options as needed.
 - For details on option settings, refer to "User's Guide[Scan Operations]/[Using Scan Sending Functions in Classic Style]".
- 5 Use the Start key to start transmission.
 - If necessary, tap [Check Setting] before transmission, and check the specified destination and settings.
 - Using the Stop key enables you to stop scanning the original. A list of the currently stopped jobs is displayed. To stop transmission, select the target job from the list, and delete it.



 **Tips**

- IP fax (SIP) is not available on the screen of classic style.

 **Related setting**

- [Basic Setting] - [Default Scan/Fax Settings] ("User's Guide[Descriptions of Functions/Utility Keys]/[Utility]")

 **Reference**

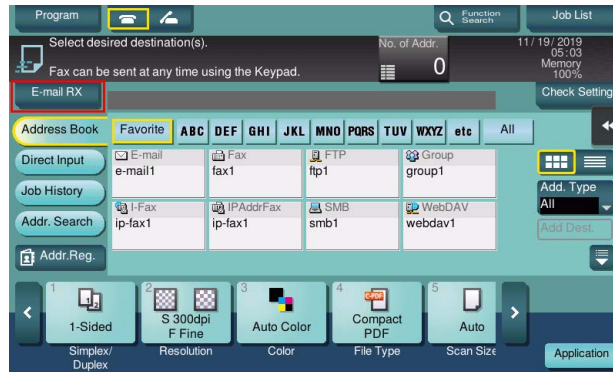
Sending after checking the Finish ("User's Guide[Scan Operations]/[Using Scan Sending Functions in Classic Style]")

Sending after recalling a program ("User's Guide[Scan Operations]/[Using Scan Sending Functions in Classic Style]")

6.3 Manual Receiving of Internet Fax

You can manually inquire the mail server about whether a fax arrives.

Tap [E-mail RX] to inquire the mail server, and receive and print any fax receipt message.



Notice to users

Type	Notice
<ul style="list-style-type: none">• Class A items (Broadcast communications unit for business use)	This class A product is registered in Electromagnetic Compatibility, and User may be required to take adequate measures for other purposes than household use.
<ul style="list-style-type: none">• Class B items (Broadcast communications unit for household use)	This class B product is registered in Electromagnetic compatibility and is for domestic environment and also for general use.

※ This device is in the Class A items in the North America.

※ This device is in the Class B items.

